



GAT MONTHLY MEMBERSHIP PROGRESS REPORT

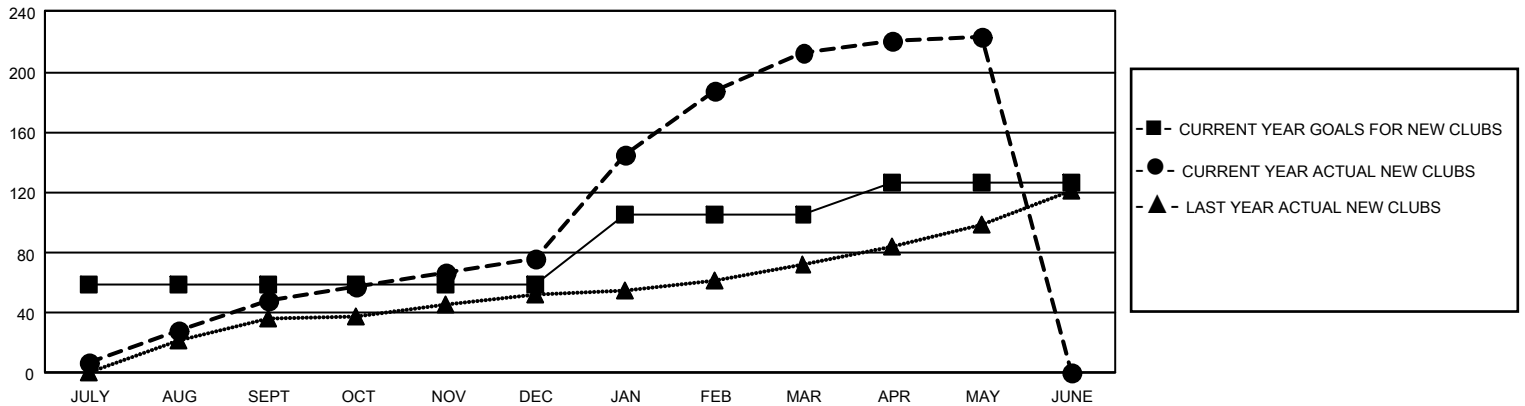
Results as of: 5/31/2025

GMT Constitutional Area 6 - S, Group A

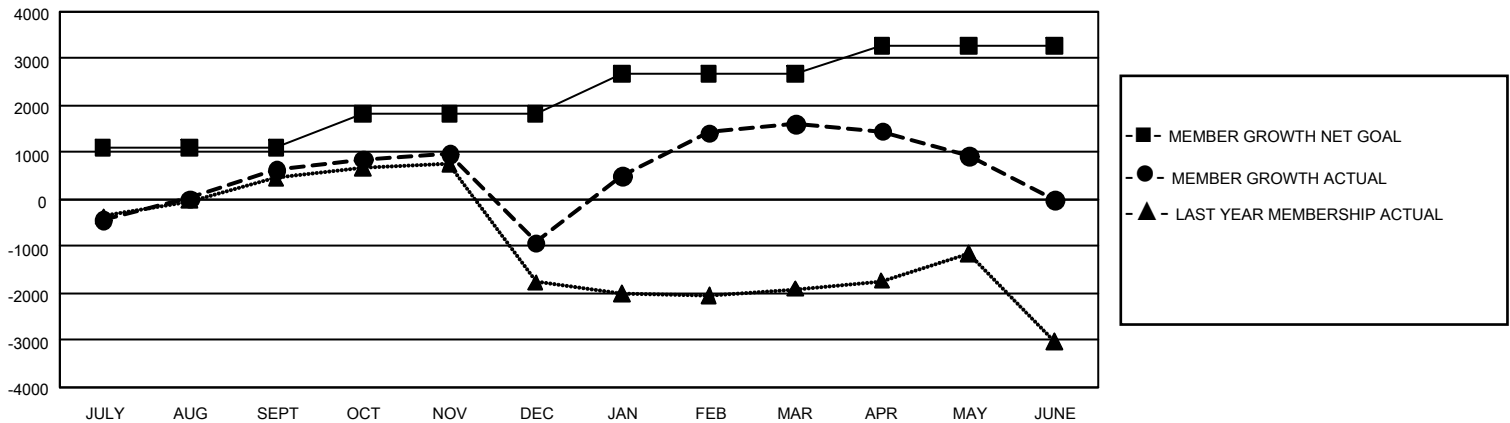
REPORT DOES NOT INCLUDE CLUBS IN UNDISTRICTED AREAS.

Clubs				Members			
RESULTS FOR 2024-2025				RESULTS FOR 2024-2025			
QUARTER	NEW CLUB GOAL	NEW CLUBS	DROPPED CLUBS	QUARTER	MEMBER GROWTH NET GOAL	MEMBER GROWTH ACTUAL	DROPPED MEMBERS ACTUAL (including transfers)
JULY/AUG/SEPT	177	48	18	JULY/AUG/SEPT	1099	3,065	1,754
OCT/NOV/DEC	0	28	59	OCT/NOV/DEC	720	2,147	3,389
JAN/FEB/MAR	138	137	20	JAN/FEB/MAR	858	4,535	1,554
APR/MAY/JUNE	63	10	12	APR/MAY/JUNE	598	961	1,425

GOALS AND ACTUAL NEW CLUBS CUMULATIVE



GOALS AND ACTUAL MEMBERS CUMULATIVE



DROPPED CLUBS: 109

865 CLUBS OF 1,697 ADDED 1 OR MORE NEW MEMBERS

GENDER DISTRIBUTION

MALE	31,834 (75.56%)
FEMALE	10,265 (24.36%)
NON BINARY	0 (0.00%)
PREFER NOT TO ANSWER	33 (0.08%)

DROPPED MEMBERS

DECEASED	74
CLUB CANCELLED	2,495
OTHER	5,533
TOTAL	8,102

[CLICK HERE FOR CUMULATIVE MEMBERSHIP DATA](#)

TOTAL FAMILY UNIT MEMBERS 10,619

FAMILY MEMBERS PAYING HALF DUES 6,485